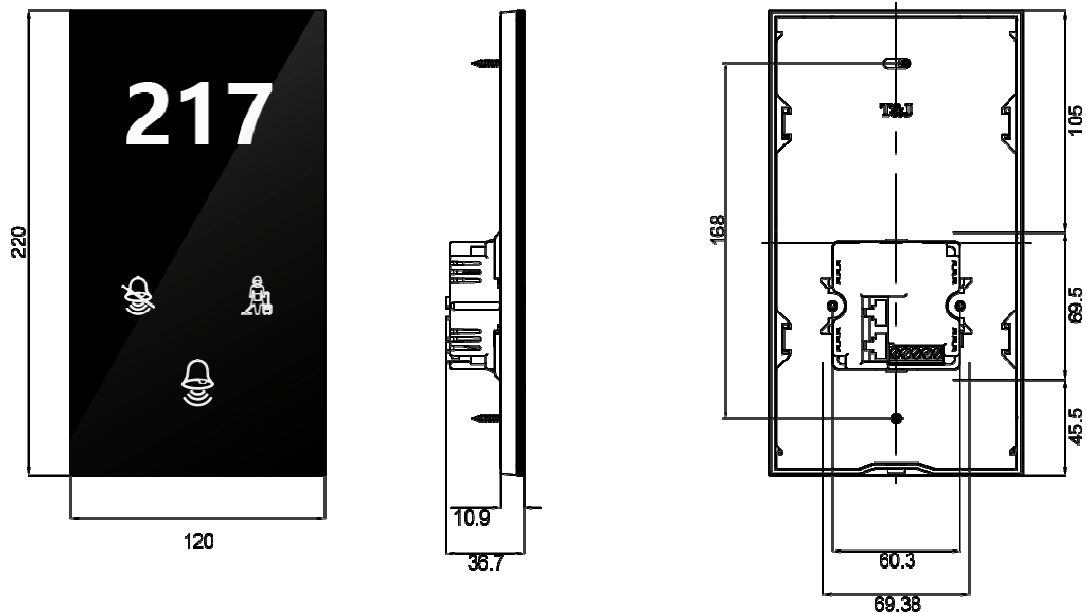


## Overview

- T&J door signage is a complete system for the hotel guest room's signage control.
- T&J door signage has built-in logic control on the DND, MUR, WAIT and Bell operation. These logic include the interlocking between DND, MUR and door bell chime. It shall control the related indicator LED on both door signage and switch panel inside the room.
- T&J door signage shall help cut down the electrical wiring for implementing the signage function by using one Cat5 cable.
- T&J door signage shall built-in RS-485 communication port for remote control / monitoring.

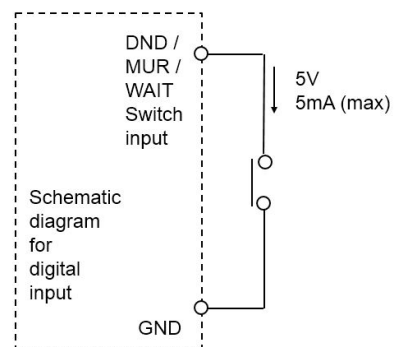


## General specifications

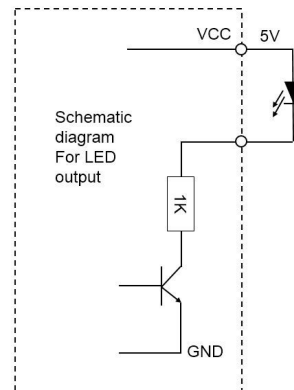
- Tampered glass
  - thickness: 3mm
  - hardness: 5.5-6
- Frame: fire-retardant Polycarbonate
- housing: Coated iron sheet

## Electrical

- Power  
220~250VAC version
  - DL-HM-DMB (DND, MUR, Bell)
  - DL-HM-DMPB (DND, MUR, WAIT, Bell)9~12VDC version
  - DL-HM9-DMB (DND, MUR, Bell)
  - DL-HM9-DMPB (DND, MUR, WAIT, Bell)
- Power consumption:  $\leq 2.5W$
- Over-voltage protection: Yes
- Touch-sensing Bell Switch
- Backlight on the room number display.
- Indicator's color:
  - DND indicator: red
  - MUR indicator: green
  - WAIT indicator: amber
  - Bell indicator: white
- Relay output for door bell
  - 3A @ 250V AC (max)
  - 3A @ 24V DC (max)
  - 3A @ 12V DC (max)
- Input point
  - common ground connection
  - sensing voltage at 5V
  - sensing current 5mA (max)



- LED output
  - common voltage connection
  - DC output voltage: 5 V
  - output current: 5 mA (max)
  - The schematic diagram for LED output is shown on left picture.



## Environment

- Temperature : -20°C~ +75°C
- humidity : 10%~ 85%
- net weight: 657g
- ingress protection: IP 20

## Terminals

- screw size: 5mm  
cable size: ??
- RJ45 socket: cat 5 cable or cat 5e cable
  - Max cable length: 5m
- RS485 port
  - 2-wire RS-485
  - Baud: 9600 bps
  - Parity: none
  - Stop bit: 1
- Wall box
  - 1Gang wall box with depth of 35mm (minimum)

## Product code

220~250VAC version

DL-HM-DMB-xxx (DND, MUR, Bell)

DL-HM-DMPB-xxx (DND, MUR, WAIT, Bell)

9~12VDC version

DL-HM9-DMB-xxx (DND, MUR, Bell)

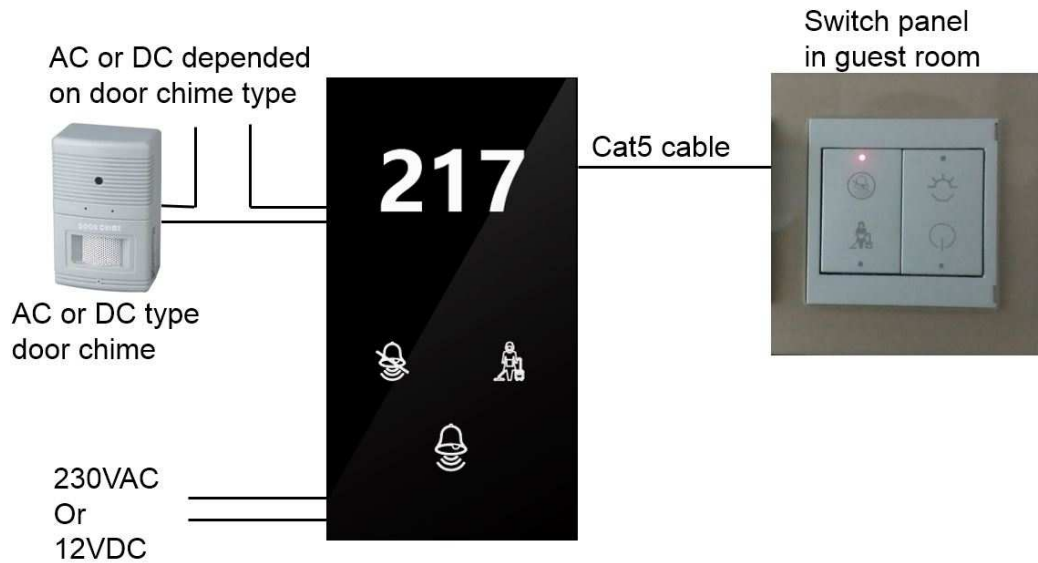
DL-HM9-DMPB-xxx (DND, MUR, WAIT, Bell)

xxx – color code for the glass

## Operation Instruction

There are only few components to form the Signage system. The door signage installed outside of hotel room, the switch panel and door chime. The typical configuration is shown on below picture.

The doorbell touch switch is on the same location as doorbell logo.



Typical configuration

### Normal mode

After power up the door signage, it is on normal mode, default status:

- room number: ON
- doorbell indicator: ON
- doorbell switch: enabled
- DND indicator: OFF
- MUR indicator: OFF
- WAIT indicator: OFF (for DL-HMx-DMPB)
- When doorbell switch has been touched, the door chime shall has been activated. At the same time, the doorbell indicator shall blink. The bell shall go on as long as doorbell switch has been touched.
- When hotel guest press the MUR or WAIT switch on the Switch Panel, the MUR or WAIT indicator on Door Signage and Switch Panel shall be turned "ON". When it is pressed again, it shall turn OFF.

### DND mode

When DND switch on switch panel has been pressed, Door Signage shall go to DND mode.

Indicator on Door Signage

- DND indicator: ON
- MUR indicator: OFF
- WAIT indicator: OFF
- Doorbell switch: disable

Indicator on Switch Panel

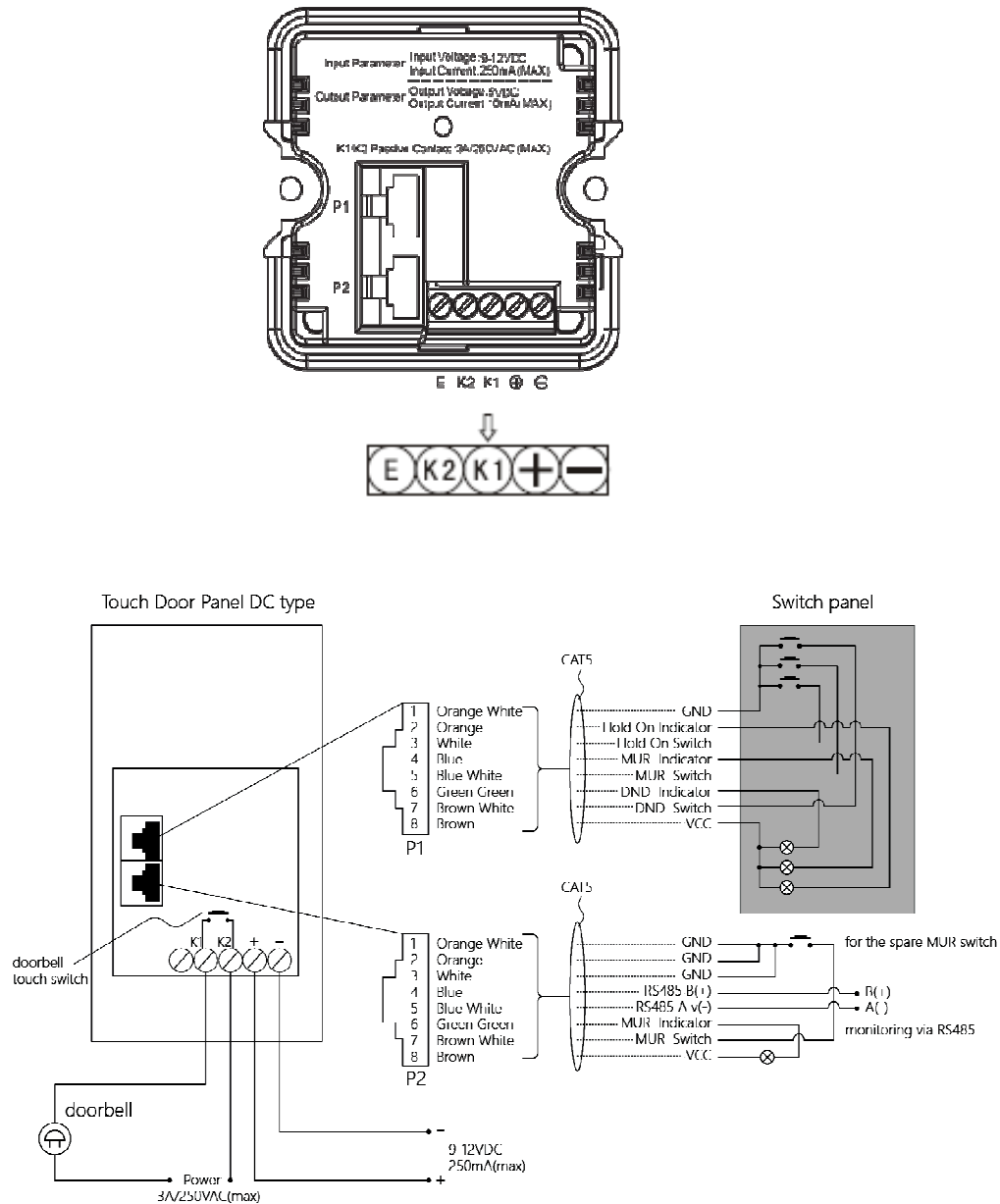
- DND indicator: ON
- MUR indicator: OFF
- WAIT indicator: OFF

No matter what is the status of MUR or WAIT, once Signage system go to DND mode, both of them are OFF

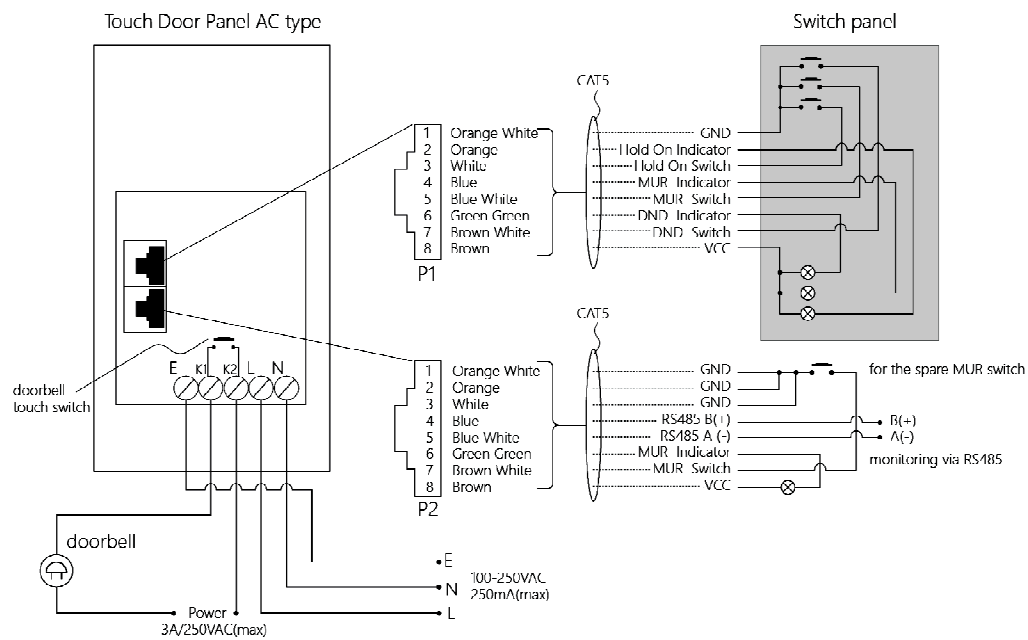
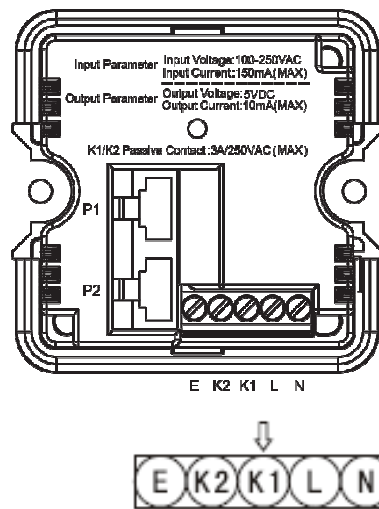
After the Signage system in DND mode, any press on the MUR or WAIT button, it shall go back to normal mode and its corresponding indicator shall be turned ON.

# Wiring diagram







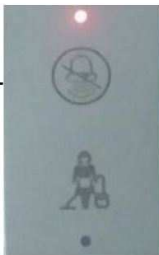

## DC version



## AC version



## Compatible T&J switches with Door Signage

Door Signage	Compatible T&J switch	
DL-HM-DMB DL-HM9-DMB	DL-W2722L-D3E - Top red LED - Bottom green LED	
	  <p>Straight Cat5 cable from P1 RJ45 socket</p>	
Door Signage	Compatible T&J switch	
DL-HM-DMPB DL-HM9-DMPB	DL-W2722L-D3E - Top red LED - Bottom green LED	
	DL-W2721L-D4A - Bottom amber LED	
	   <p>Straight Cat5 cable from P1 RJ45 socket</p>	



## Installation instruction

### Step1:

To dig a hole to with the dimension more than 70mm x 70mm, fix a 86 bottom case; open a wire hole, and thread all the cables (power line, cat5 for ports P1, P2) through the hole.

### Step2:

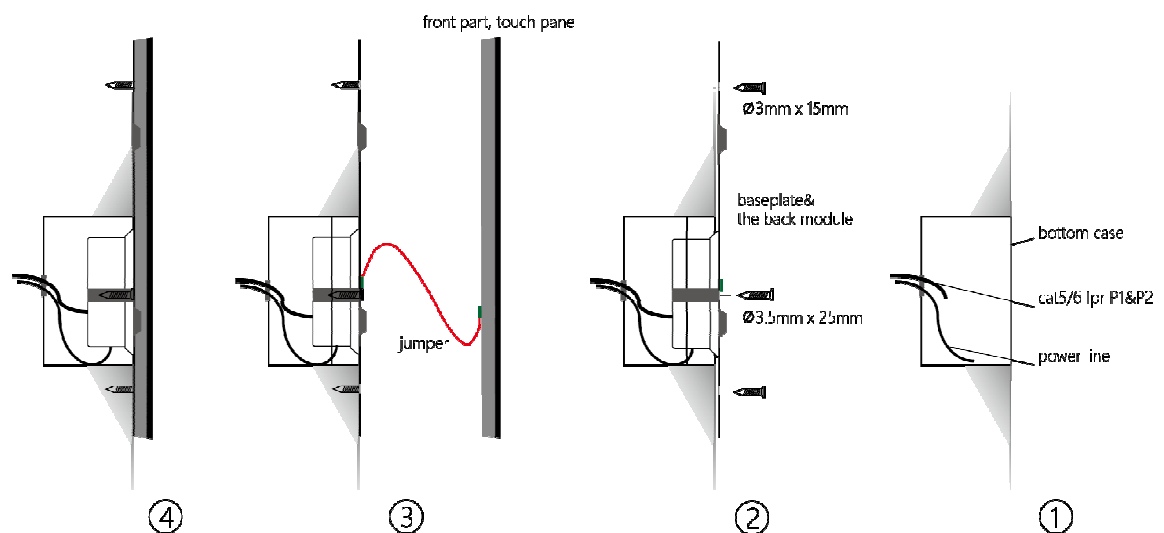
After connect cables to the module's ports, then mount the back plate& back module with screws (3mm \* 15mm, 3.5mm \* 25mm).

### Step3:

To fix the jumper line between the touch panel and the back module.

### Step4:

To fix the touch panel at back plate's bayonet, then finish the installation.



**Note:** Don't power on until the device's installation has been finished.